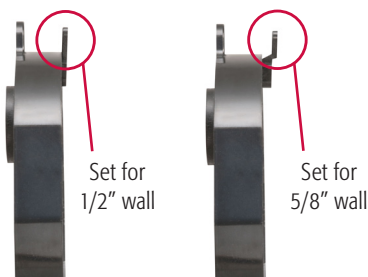


## Low Profile Sconce Box

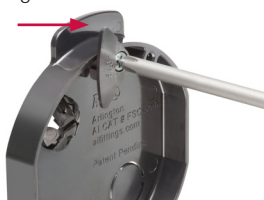


### INCLUDES...

5.0 cu. in. Low Profile Sconce Box, NM cable connector, (2) mounting wings for 1/2" drywall, (2) mounting wings for 5/8" drywall, and (2) installation screws for 'wings'.



Easy-to-install mounting wings



Non-metallic, installs in existing 1/2" or 5/8" walls with 4" hole saw.

### FEATURES AND BENEFITS

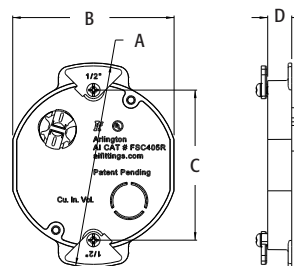
- Time-saving solution to retrofit installations that have shallow wall cavities—or obstructions running behind the wallboard
- Includes NM cable connector and mounting wings for 1/2" or 5/8" drywall and installation screws for mounting wings
- 4" diameter box accommodates most sconce light canopies, completely hiding the box

CATALOG NUMBER	UPC/DCI/NAED MFG #018997	DESCRIPTION/ CU. IN. / DIA.	UNIT PKG	STD PKG	DIM A	DIM B	DIM C	DIM D
FSC405R	04094	Non-metallic/ 5.0 cu. in./4" dia.	1	10	4.760	3.760	3.500	.500

Add suffix "GC" to Catalog # when ordering in Canada, for example FSC405RGC.

Refer to chart on page R-23 for load ratings and number of single conductors.

**PATENT PENDING.**

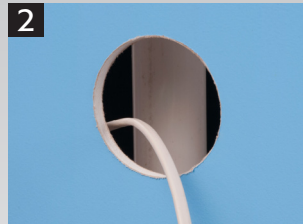


## INSTALLATION INSTRUCTIONS

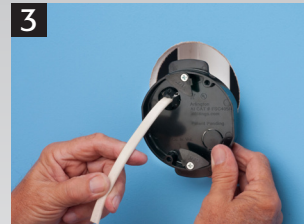
### FOR EXISTING WALLS:



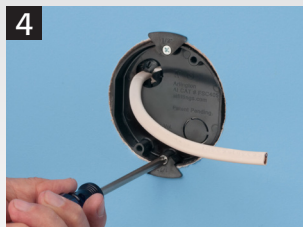
1 Determine sconce light location. Cut opening with 4" hole saw.



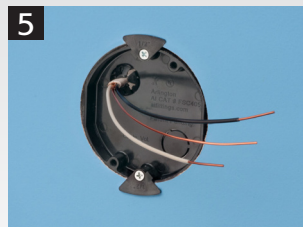
2 Pipe obstruction behind wall prevents the installation of a typical sconce box. Install mounting wing for 1/2 or 5/8" drywall. Pull cable...



3 ...Inserting it into installed NM94 connector. Tilt box to insert it into the stud cavity.



4 Pull box towards you, into the 4" opening. Flip the retaining wings outward. Tighten screws to secure box to wallboard.



5 Finished box installation. Ready to install sconce light.

Scan For Video

